



FA3403 SERIES

Triaxial Accelerometer



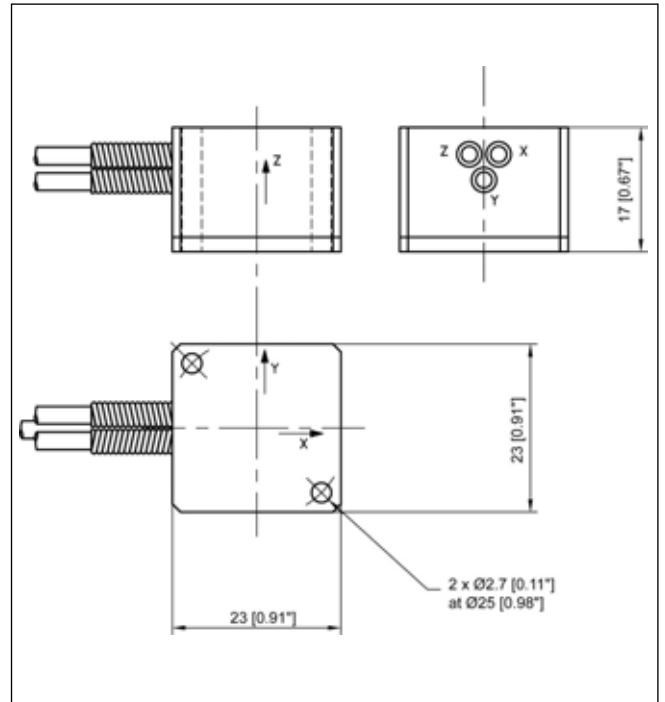
- Full Scale Range ± 2 g to ± 500 g
- Triaxial Measurements
- Bandwidth from DC
- Over-range Stops
- Integrated Amplifier

The FA3403 is a general purpose triaxial accelerometer with a selectable operating range of ± 2 g to ± 500 g for each direction. Packaged in a rugged metal case, this accelerometer is designed for easy handling and is suitable for a wide range of environmental conditions. The FA3403 includes internal conditioning electronics for direct high level voltage output. It operates from a unipolar voltage supply.

Model **FA3403-A1** offers ± 2 Vdc F.S. output with a zero offset of 2.5Vdc, whereas model **FA3403-A9** offers a differential ± 4 Vdc F.S. output. Mechanical stops ensure over-range protection up to ± 2000 g for all ranges.

With many years of experience as a designer and manufacturer of sensors, FGP Sensors often works with customers to design or customize sensors for specific uses and testing environments.

To meet your needs we also offer complete turnkey systems. The matched components (sensor, power, amplifier and digital display) are formatted, calibrated and ready for immediate use.



北京汇润科贸有限公司

电话 : + 86 010 5601 8989

+ 86 010 5601 7979

传真 : + 86 010 5885 7266

邮箱 : sales@aq315.com

<http://www.aq315.com>

Characteristics

Measurement Range (g)	± 2	± 5	± 10	± 20	± 50	± 100	± 200	± 500
Frequency Response 0.5dB (Hz)	0-100	0-150	0-250	0-400	0-700	0-700	0-700	0-700

Performance specifications subject to change without notice. xx, 2005

Technical Specifications

Range (F. S.)

From ± 2 to ± 500 g (see table on reverse side)

Over-range

± 2000 g (0.1 ms)

Accuracy

Non-Linearity : $< \pm 2\%$ F.S.

Transverse Sensitivity : $< 3\%$ F.S.

Temperature Range

Operating Temperature Range (OTR) : -20 to 80 °C [-4 to 176 °F]

Compensated Temperature Range (CTR) : 0 to 60 °C [32 to 140 °F]

Zero Shift in CTR : $< 2\%$ F.S. / 108 °F

Sensitivity Shift in CTR : $< 2\%$ of reading / 108 °F

Electrical Characteristics

Reference	FA3403-A1	FA3403-A9
Supply Voltage	10 to 30 Vdc	10 to 30 Vdc
F.S. Output	± 2 Vdc (± 250 mV)	± 4 Vdc (± 250 mV)
Zero Offset	2.5 Vdc (± 250 mV)	0 Vdc (± 250 mV)
Consumption	< 30 mA	< 30 mA
Output Impedance	< 90 Ω	< 90 Ω
Insulation under 50Vdc	≥ 100 M Ω	≥ 100 M Ω

Electrical Termination

Shielded cable standard length 2 m [6.5 ft] with strain relief spring

Mechanical Characteristics

Housing Material : Anodized aluminium

Weight w/o cable : < 30 grams

Product References

High Level Output Sensor

Model

F.S. Output Reference

A1 : Single Ended Output

A9 : Differential Output

Full Scale Range (F.S.)

X/Y/Z In g

Option(s)

L : Linearity $\leq \pm 1\%$ F.S.

ZI : Zero shift $\leq \pm 1\%$ F.S. / 108 °F

ET1 : CTR -20 to 100 °C [-4 to 212 °F] OTR=CTR

ET2 : CTR -40 to 120 °C [-40 to 248 °F] OTR=CTR

ET5 : CTR -40 to 80 °C [-40 to 176 °F] OTR=CTR

LC"X" : Additional cable length in ft

FA3403

A1

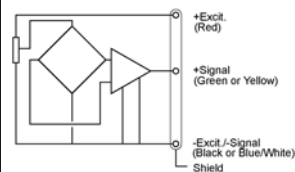
$\pm 2/\pm 10/\pm 20$

L

"X" = Custom value

Wiring Schematic / axis

FA3403-A1



FA3403-A9

